

PALFINGER

**STRONG ARGUMENTS.
INNOVATIVE PALFINGER
LOADER CRANE
TECHNOLOGY FOR
YOUR BENEFIT.**

LIFETIME EXCELLENCE

PALCOM

RADIO REMOTE CONTROL

P-FOLD

ASSISTANCE SYSTEM

DPS^{PLUS}

DUAL POWER SYSTEM PLUS

AOS

ACTIVE OSCILLATION SUPPRESSION

HPSC^{PLUS}

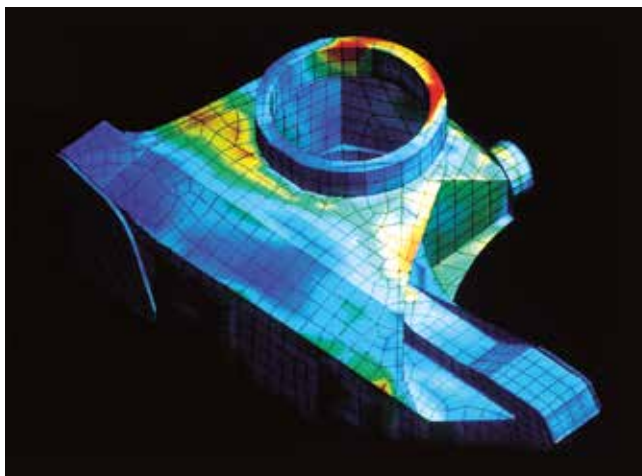
HIGH PERFORMANCE STABILITY CONTROL

SRC

SYNCHRONIZED ROPE CONTROL



FEWER TRIPS NECESSARY DUE TO HIGHER PAYLOAD



PALFINGER truck-mounted cranes have a low dead weight due to their weight-optimized construction. Operators profit from a higher payload and lower fuel costs. It is possible to save approximately every 20th truck load due to the approx. 5% advantage in payload.

Calculate for yourself!



_____ truck loads per year

x 0,05 (=5%)

= _____

truck loads saved



x _____ truck load



= _____

trips saved per year



MAXIMUM RESALE VALUE



PALFINGER products achieve by far the highest resale values due to their

- high product quality
(long-term surface protection; design and finish)

According to a European used machinery list, on average PALFINGER truck-mounted cranes achieve approximately 10 % higher resale values on the used machinery market after 10 years than competitor products. That converts to around 100 Euros of extra income per meter tonne.

Calculate for yourself!

_____ meter tonnes of your
truck-mounted crane

x 100,– Euro

or

x _____ your currency - equal 100 Euro

= _____

of additional income achieved on resale



OVERVIEW CONTENTS



EFFICIENCY IN USE DUE TO



Power Link	4
Single Link Plus / Power Link Plus	6
Radio Remote Control	10
PALcom P7	12
P-Fold	16
AOS	18
HPLS	20
HPSC	22
HPSC-Plus LOAD	24
Low Maintenance Extension System	26
Soft Stop	28
High Speed Extension	30
Continuous Slewing System	36
Hydraulically Tilttable Stabilizers	38
Integral Base Frame	40
Integral Tank	47
Oil Cooler	50
Hose Equipment	51
Fly-Jib	52
DPS-Plus	54
Load Sensing Control Valves	56
Rope Winch	58
Power Link Rope Winch	60
RTC	62
SRC	64
Comfort Cable Routing	66
MCC	68
Hose Guides Main Boom - Knuckle Boom	70
Lightweight Design	71
Hose Equipment internally	72
Service Network	86
Original Spare Parts	88
Warranty	91

A GREAT VARIETY OF APPLICATIONS DUE TO



Power Link	4
Single Link Plus / Power Link Plus	6
AOS	18
HPSC	22
FPM	31
Continuous Slewing System	36
Fly-Jib	52
DPS-Plus	54

Power Link Rope Winch	60
Equipment	76

OPERATOR-FRIENDLY DUE TO



Power Link	4
Paltronic	8
Radio Remote Control	10
PALcom P7	12
Menu Navigation	14
P-Fold	16
AOS	18
HPLS	20
HPSC	22
HPSC-Plus LOAD	24
Low Maintenance Extension System	26
Soft Stop	28
Interlock System	34
Hydraulically Tiltable Stabilizers	38
Functional Design	42
Control Panel Light	44
Hose Equipment	51
DPS-Plus	54
Load Sensing Control Valves	56
Rope Winch	58
Power Link Rope Winch	60
RTC	62
SRC	64
High Stand	67

MAINTENANCE AND SERVICE-FRIENDLY DUE TO



Single Link Plus / Power Link Plus	6
Paltronic	8
Radio Remote Control	10
HPSC	22
Low Maintenance Extension System	26
Continuous Slewing System	36
Functional Design	42
Digital Operating-Hours Counter	48
Digital Hour Counter for Rope Winch	49
Hose Equipment	51

SAFE CRANE OPERATION DUE TO



Paltronic	8
Radio Remote Control	10
PALcom P7	12
Menu Navigation	14
P-Fold	16

AOS	18
HPSC	22
HPSC-Plus LOAD	24
Soft Stop	28
FPM	31
Interlock System	34
Continuous Slewing System	36
Integral Base Frame	40
Functional Design	42
Control Panel Light	44
Warning Lights on the Stabilizers	45
Tiltable Stabilizer Plates	46
RTC	62
SRC	64
High Stand	67
Oil Level and Oil Temperature Display	73
Geometry Control	74
Assembly and Testing	85

INCREASED RESALE VALUE DUE TO



AOS	18
HPLS	20
Low Maintenance Extension System	26
Coating Technology	32
Continuous Slewing System	36
Functional Design	42
Rope Winch	58
Assembly and Testing	85
Original Spare Parts	88

DESIGN AND LOOK DUE TO



Low Maintenance Extension System	26
Coating Technology	32
Functional Design	42

ENVIRONMENTALLY FRIENDLY DUE TO



PALcom P7	12
Coating Technology	32
Lightweight Design	71

BEST SERVICE ORGANIZATION DUE TO



MCC	68
Service Network	86
Dealer Standards	87
Training PALFINGER University	90

POWER LINK DOUBLE LINKAGE SYSTEM



Product Features

The linkage system is a special connection between the knuckle boom and main boom which increases the lifting power of the crane in the most important boom positions. The PALFINGER POWER LINK system is a double linkage system with a linkage on the knuckle boom and a linkage between the main boom and crane column.

How It Works

On a crane without POWER LINK the distance between the bolts and cylinder pivot point changes during the motion sequence.

Through this change, the crane loses up to 70% of its power. With POWER LINK this distance is always constant. Therefore constant lifting moment is achieved independent of the boom position.

MORE POWER ON THE HOOK

More Efficiency in Use

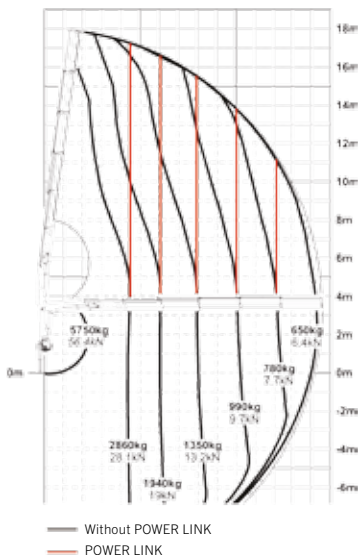
- The maximum load can be raised vertically. This way greater outreach is achieved with maximum load. (Load curves run vertically on the payload charts)
- The crane can lift the maximum load even when main boom and knuckle boom are one line
- Compact transport size through parallel folding up of the boom system

A great Variety of Applications

- Larger operating radius (up to more than 180 degrees)
- Maximum load can be lifted even with main boom fully erected (this is the weakest position for non linkage cranes)
- Heavy and bulky loads can be brought close to the column

Operator-Friendliness

- Easier crane operation due to constant speed during the whole movement



SINGLE LINK PLUS POWER LINK PLUS



Product Features

At PALFINGER, SINGLE LINK PLUS or POWER LINK PLUS mark the further development of the linkage system to the reverse linkage system. A PALFINGER development that is state of the art for modern truck-mounted cranes today. The knuckle boom can extend backwards up to 15°.

SINGLE LINK PLUS:

Reverse linkage system for single linkage cranes

POWER LINK PLUS:

Reverse linkage system for double linkage cranes

How It Works

A completely new kinematics is achieved due to lengthening of the cylinder and a change to the linkage and the shape of the main components. As a result, it is possible for the knuckle boom to overextend over the horizontal line of the main boom.

A VARIETY OF USES FOR THE MOST DIFFICULT APPLICATIONS

More Efficiency in Use

- The large range of movement of the knuckle boom up to 195° increases the efficiency of the truck-mounted crane's work
- The crane can be folded down on the loading deck extended without exceeding the legal vehicle height

A great Variety of Applications

- The crane can perform work in limited spatial conditions (e.g. through window openings and doorways)
- Lifting can still be performed despite obstacles (e.g. between ceiling supports)
- Precise and accurate control due to constant speed during the whole motion cycle

Maintenance and Service-Friendliness

- Inspection- and maintenance work on the boom system can be carried out more easily



PALTRONIC



Product Features

With the PALTRONIC, PALFINGER offers the latest control electronics for the series production crane. Different systems are available depending on the series and the range of functions.

The most important safety and comfort functions include:

- Overload cut-off
- Stability control (HPSC)
- High Power Lifting System (HPLS)
- Active Oscillation Suppression system (AOS)
- Dual Power System plus (DPS plus) in the fly-jib operation
- Synchronised Rope Control (SRC)
- Rope Tension Control (RTC)
- Assistance system (P-Fold)

How It Works

The PALTRONIC controls and monitors the crane.

1. Pressure sensors on the cylinders send the capacity information of the crane to the PALTRONIC system.
2. Position sensors send information on the position of the boom system, the slewing gear or the stabilizer support to the PALTRONIC system.

Based on the incoming signals, the PALTRONIC system decides on deactivating or activating systems.

THE BRAIN OF THE CRANE

Operator-Friendliness

- Direct communication with the crane. Display of the utilization and overload directly on the operator's handset
- Full concentration on load handling through continuous monitoring of the crane

Maintenance and Service-Friendliness

- Quick and easy troubleshooting through permanent status read-out on the display panel
- Recording of the crane status
- Quick and uncomplicated programming

Maximum Reliability

- Tried and tested, proven technology
- Flawless coordination of the entire electronics structure from sensor system to software
- High resistance to vibrations and temperature fluctuations

Safe Crane Operation

- Protection of the crane and its attachments against overloading
- Monitoring of the stability depending on the boom position and support situation



RADIO REMOTE CONTROL



Product Features

Today, radio remote controls are often considered to be standard equipment when it comes to modern loader cranes. PALFINGER radio remote controls are equipped with a choice of a linear lever or cross lever and provide the greatest possible comfort for the operator. For cranes with PALTRONIC, an LED respectively LCD or TFT colour display informs the crane operator of the different operating conditions. For crane models PC 1500 up to PK 4200 an individual pocket -radio remote control is available. For all SH and TEC-models we offer our in-house developed PALcom P7.

How It Works

The remote control transmitter (handset) is responsible for transmitting the commands made on the levers as signals to the receiver. The receiver forwards the signals to the electronics, which convert them into crane movements by means of hydraulic control valves.



EFFICIENT ONE-MAN OPERATION

More Efficiency in Use

- Efficient "one-man operation"
- Actuation of additional functions directly on the operating console
- The operator can see the crane load even when not standing near the crane

Operator-Friendliness

- Individual operating elements (cross or linear lever) and carrying straps available
- Individual speed settings possible

Maintenance and Service-Friendliness

- Quick troubleshooting through error code display
- Easy to replace transmission consoles

Safe Crane Operation

- Possible to operate outside the danger zone
- Safety switch-off in the event of frequency overlap
- Alternative cable operation is available when working in areas where radio frequencies are not permitted (airports, hospitals,...)



PALCOM P7



Product Features

The PALcom P7 is a radio remote control developed in-house by PALFINGER. The exclusive loader crane radio remote control handset features a modern, ergonomic design. The hand rests and set-up of the control levers are carefully chosen to enable fatigue-free work. A centrally located "PALdrive" knob and a large colour display enable a easy and safe operation. The "intelligent" charging station measures the charge level of the battery and temperature of the surrounding area, thereby facilitating a gentle and quick charging process. In addition, the charging station checks whether it and the battery are operating properly. The charging station also features a refresh function, which ensures full battery capacity throughout the entire service life of the battery.



FATIGUE-FREE OPERATION

More Efficiency in Use

- Long operational time thanks to long battery life (up to 12 hours)
- Stable radio transmission thanks to frequency hopping

Operator-Friendliness

- Fatigue-free operation thanks to ergonomic design of the hand rests and control panels
- Optimum wearing comfort thanks to ergonomically shaped carrying straps

Safe Crane Operation

- Accidental crane movements are avoided thanks to a rollover- and acceleration sensor
- Better legibility of the control symbols in poor lighting conditions thanks to four LED's
- High safety standard thanks to optical, acoustic and haptic feedback on the radio remote control handset

Environmental Friendliness

- Quick and gentle charging thanks to the intelligent charging station
- High battery lifetime thanks to the refresh function

MENU NAVIGATION



Product Features

On the new PALcom P7 a central 4.1 inch TFT-colour display with transfective technology is used for the first time in the loader crane sector. Thanks to the “transflective” technology, the large display can be easily read, even in bright sunlight, but is still highly energy-efficient. A centrally arranged control knob “PALdrive” and an intuitive menu navigation with a large display offer easy and save operation. The operator is informed exactly about the different operating states and is guided clearly and safely at all times.



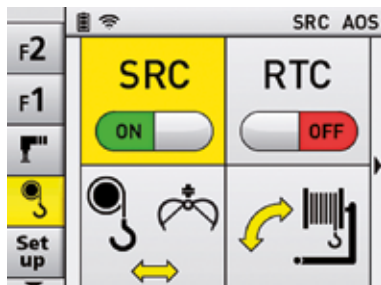
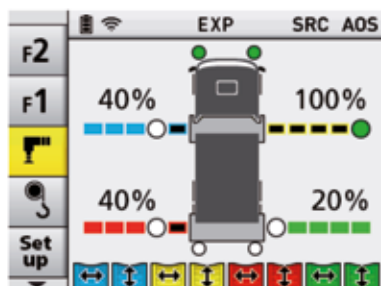
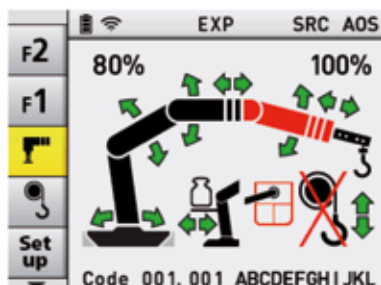
IN DIALOG WITH THE USER

Operator friendly

- Easy and safe operation thanks to an intuitive menu with 4.1-inch TFT color display and "PALdrive" control knob
- Display is easily legible even in direct sunlight thanks to transfective technology

Safe Crane Operation

- High safety standard thanks to optical, acoustic and haptic feedback on the radio remote control handset



P-FOLD



Product Features

P-Fold is a new PALFINGER assistance system. It makes folding and unfolding an easy job for the operator. The P-Fold system also works in combination with the innovative RTC (Rope Tension Control). Both systems perfectly support the crane's set-up processes and thus reduce set-up times to a minimum. The operator will be guided safe and clearly thanks to the intuitive menu navigation of the new PALcom P7 – a major benefit also for inexperienced operators. In addition to the significant increase in operator comfort, the prevention of damage on vehicle, load and rope is another important point.

The P-Fold system will be available for SH-, TEC-models with the new PALcom P7, from the PK 42002 SH to the PK 200002 L SH.

PERFECTLY SET UP WITH FINGERTIP MOVEMENT

How It Works

1. UNFOLDING WITH FINGERTIP MOVEMENT

After P-Fold is activated, the crane is set in motion by moving just one control lever. The intelligent control-system coordinates all the crane movements and fly jib movements until a defined working position is reached. In combination with RTC, the winch will also be controlled fully automatically by P-Fold.

2. FOLDING WITH FINGERTIP MOVEMENT

After the job is finished, the crane can be folded from any working position. P-Fold again coordinates all crane movements including the fly jib functions. The operator controls the innovative system with just one control lever until the crane has reached its final transport position

Efficiency in Use

- Time saving through automated folding and unfolding of the crane.

Operator friendly

- Easy and intuitive operation thanks to the PALcom P7 radio remote control.
- Higher comfort through automated folding and unfolding of the crane.

Safe Crane Operation

- Prevention of damage to vehicle or crane during folding and unfolding.



AOS ACTIVE OSCILLATION SUPPRESSION



Product Features

The patented PALFINGER ACTIVE OSCILLATION SUPPRESSION (AOS) system dampens the boom system of the crane, compensating for vibration and shock, even after a sudden stop of the lifting function. The result is a significant increase in safety in crane operation for operator, loads and surrounding areas.

How It Works

AOS receives pressure readings from special sensors mounted at both the top and bottom of the main lifting cylinder. The system then sends inputs to each side of the control valve spool to counteract the pressure peaks. This raises and lowers the main lift cylinder very quickly and matches the frequency and amplitude of the oscillating boom. As a result, the boom is dampened to the point where only one or two small oscillations occur, bringing the boom to an immediate standstill.

MAXIMUM PRECISION AND SAFETY

More Efficiency in Use

- Experienced crane operators can move the crane much faster with pinpoint accuracy
- Helps and avoids damage to the load, truck and surroundings

A great Variety of Applications

- Adjustments can be made with the touch of your fingers
- Emptying “concrete buckets” without post-oscillation

Operator-Friendliness

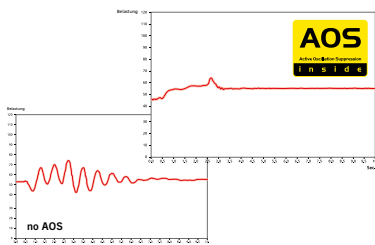
- Beginners can operate the crane with more precision and care
- Experienced crane operators can move the crane much faster without having to compromise precision and sensitivity

Safe Crane Operation

- Loads are held steady, rather than bouncing after abrupt stops
- No uncontrolled movements of the boom system in the event of unloading
- Helps to prevent collisions between the boom system and the building or other surroundings
- Increased stability, reduction of stabilizer support loading

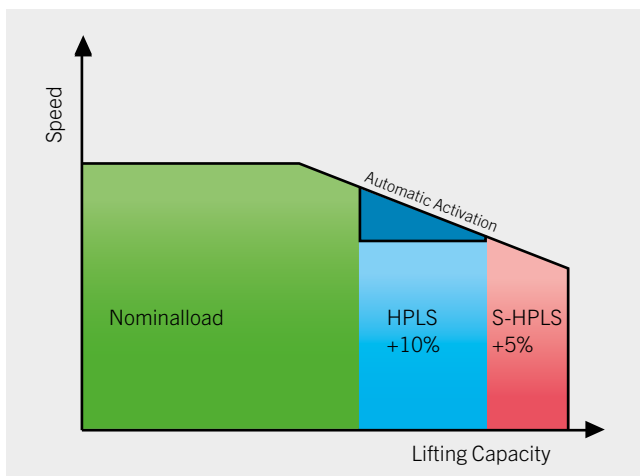
Increased Resale Value

- The boom experiences much less stress, which reduces wear and tear on the entire vehicle



HPLS

HIGH POWER LIFTING SYSTEM



Product Features

The PALFINGER HIGH POWER LIFTING SYSTEM (E-HPLS or S-HPLS) increases the capacity of the crane by up to 15% with reduced working speed. E-HPLS can be activated manually for the occasional manipulation of very heavy loads. S-HPLS is activated fully automatically for the SH crane series. There is continuous activation depending on the power required.

How It Works

If HPLS is activated, then the hydraulic pressure is increased electronically. That way, a higher payload can be achieved. At the same time, the speed is reduced by the electronics system.

MAXIMUM POWER, WHEN IT IS REALLY NEEDED

More Efficiency in Use

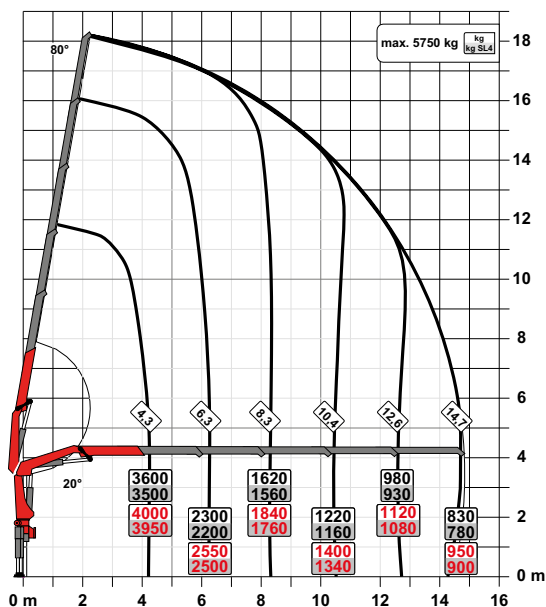
- Increased lifting power of the crane
- Better lift-to-weight ratio
- Each function is slowed by different amounts, so that less critical functions like boom extend/retract can still run close to normal speed

Operator-Friendliness

- The reduced speed allows for accurate positioning of heavy loads

Increased Resale Value

- The service life of the crane is prolonged by reduced dynamic loading of the crane structure



• without HPLS

• with HPLS

HPSC HIGH PERFORMANCE STABILITY CONTROL



Product Features

High Performance Stability Control (HPSC) is a proportional system which recalculates and defines the working range and stability of the crane. Sensors for proportional path measurement are located in the stabilizers making their positioning fully variable.

How It Works

The HPSC system calculates and defines the permissible working range for any stabilizer situation. The position of the stabilizer support is detected by means of cable extension transducers or magnetostrictive position sensors located in the outrigger. Based on an intelligent calculation algorithm developed by PALFINGER, this complex calculation process enables a very accurate approximation to the vehicle's actual stability based on the crane and vehicle's real data.

INTELLIGENT STABILITY CONTROL

More Efficiency in Use

- Optimal use of the possible working range
- Maximum lifting capacity at any point of the stability control curve

A great Variety of Applications

- Crane operation is also possible where space is restricted

Operator-Friendliness

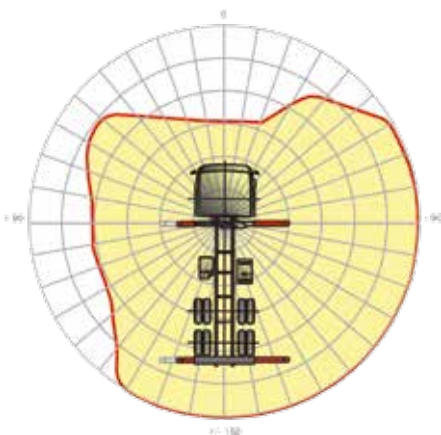
- Highest operator comfort thanks to clearly laid out display on the operator's console or on the display of the radio remote control

Maintenance and Service-Friendliness

- Easy maintenance using the PALDIAG diagnosis software

Safe Crane Operation

- An automatic shut-off will occur if outriggers or load are in a compromising situation



HPSC-PLUS LOAD



Product features

PALFINGER has developed the proved stability system HPSC further and offers application- oriented additional functions in a modular system. One of the modules of this HPSC-Plus concept is HPSC-Plus LOAD. It reacts to the loading condition of the truck and calculates on the basis of the inclination the maximum load limit suitable for the respective situation.

How It Works

In addition to the stability load limit which is defined by HPSC, there is now a second load limit which considers the inclination as a technical indicator for an increase of the stability. HPSC and LOAD complement each other perfectly and ensure that in every situation the best performance of the crane is reached at full stability. Regardless of whether the vehicle is empty, partially loaded or fully loaded, HPSC and LOAD take over the tasks of the stability monitoring automatically where necessary. The operator does not need to switch the LOAD module on or off separately.

MORE OUTREACH DUE TO LOAD DETECTION

More Efficiency in Use

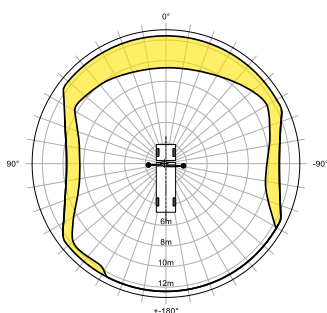
- Optimal utilization of the working range depending on the load (empty, partially loaded or fully loaded). The inclination is then used as an additional indicator for the increase of the crane performance.

Operator-Friendliness

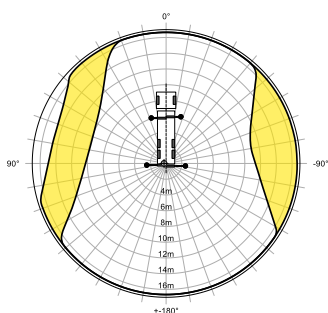
- The operator does not need to switch the LOAD module on or off separately
- Current status query directly on the PALcom P7 radio remote control

Safe Crane Operation

- No matter if HPSC or LOAD is active. The stability is always calculated automatically by the electronic overload system of the crane



PK 18502 SH
R2X front mounted on a 3-axle chassis
Stabilizer spread 33%



PK 34002 SH
R3X rear mounted on a 3-axle chassis with additional stabilizers
Stabilizer spread 66%

LOW MAINTENANCE EXTENSION SYSTEM



Product Features

With the low maintenance extension system, PALFINGER leads the way in service-friendliness. The use of sliding elements made from special synthetic material, together with the highly dependable KTL cataphoretic dip painting, means that the operator no longer needs to grease the boom system.

How It Works

The sliding elements are molded from special synthetic material and have self-lubricating properties. No further servicing is required after the first, initial lubrication, in which food grade grease is used. All other elements (slide rails, slide blocks, etc.) operate without grease. These elements have only a secondary function as sliding elements; they are primarily employed as adjustment and guiding elements. Special synthetic materials are also used for the paint in order to protect against corrosion.

MINIMUM MAINTENANCE AND SERVICE WORK

More Efficiency in Use

- No pollution of the work area and the transported goods by dripping lubricants; no subsequent costs

Maintenance and Service-Friendliness

- No greasing of the extension system by the operator
- No greasing of the sliding block in the guide rails

Operator-Friendliness

- Smoother operation of the extension

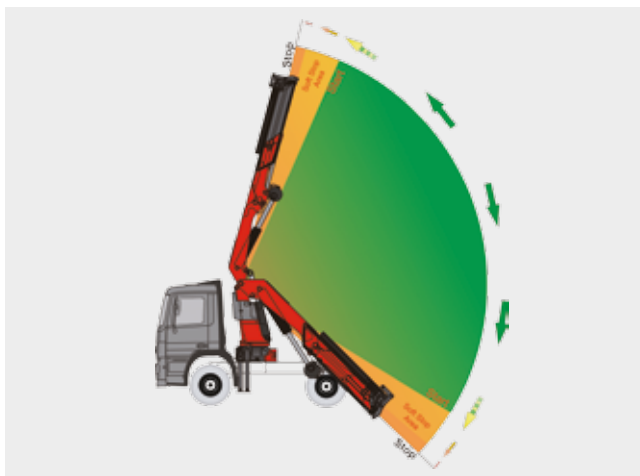
Design and Looks

- Clean appearance of the extension system and the entire crane vehicle

Increased Resale Value

- Reduction in service time and maintenance costs
- Longer service life due to less wear and tear

SOFT STOP



Product Features

Soft Stop is an electronic limit position damper. It provides gentle braking of all crane movements before the mechanical limit stop is reached. Hence, jerky movements and load impacts from oscillating loads can be avoided for the protection of the crane operator, load and vehicle.

How It Works

The movement sensors facilitate a slow approach of the movements to the limit stop. The approach to the limit stop is dampened by means of a ramp function. The ramp functions reduce the movement speed within a defined angle to a preset minimum value with which the limit stop can then be approached.

MORE SAFETY AND CONVENIENCE

More Efficiency in Use

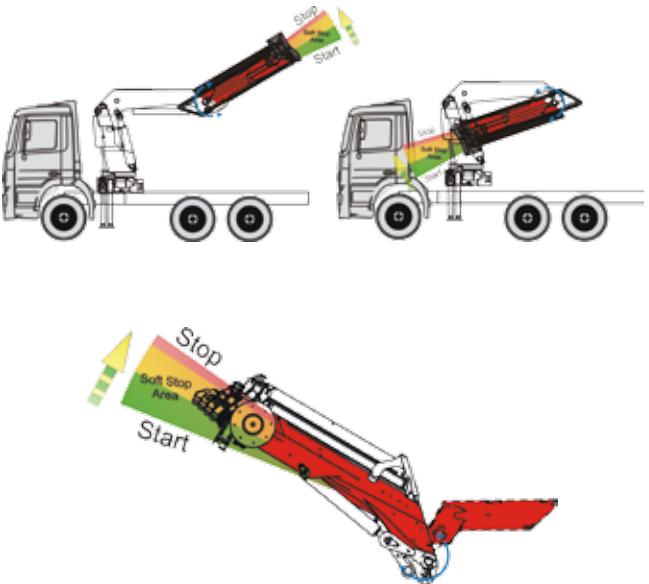
- Faster crane operation with pinpoint accuracy
- No damage to load, crane vehicle or buildings
- Less loading of the crane structure

Operator-Friendliness

- High accuracy and sensitivity of the crane
- Beginners can operate the crane with more precision and care
- Experienced crane operators can move the crane much faster with pinpoint accuracy

Safe Crane Operation

- No "post-oscillations" of the load - immediate stoppage
- Dropping of the load is prevented
- Precise and accurate control due to constant speed
- Increased stability, reduction of stabilizer support loading



HIGH SPEED EXTENSION (RETURN OIL UTILIZATION)



Product Features

The HIGH SPEED EXTENSION is a standard feature at PALFINGER. Also referred to as RETURN OIL UTILIZATION, this feature is a regenerative hydraulic circuit for the extension booms. It speeds up the boom extension and retraction functions by up to 30%.

How It Works

The return oil from piston rod side is not sent to the tank but will be diverted via the load holding valve into the pressure lines. Due to the increase in oil flow, the cylinder movement is increased and hence extension speed is also increased.

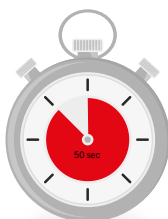
More Efficiency in Use

- Crane works faster and therefore more efficiently by reducing load cycle times

with return
oil utilization



without return
oil utilization



FPM - FALL PROTECTION MODE

COOPERATION WITH INTERNATIONAL EXPERTS



Product Features

If no stationary safety measures such as scaffolding or safety eyebolts are available on the property during work at height, PALFINGER offers an efficient solution for securing people using the loader crane with its fall protection mode (FPM). This makes it possible to work freely in exposed areas.

Safe Crane Operation

- Automatic speed reduction with activated FPM
- Operation by a second person (Crane driver)
- Only one crane movement possible (Single Movement)

Great variety of applications

- Crane can be used as attachment point (only in exceptional cases)

Requirements for Fall Protection Mode

- Possible only with SH and TEC 7 cranes
- Only under consideration of the DACHS directives

COATING TECHNOLOGY

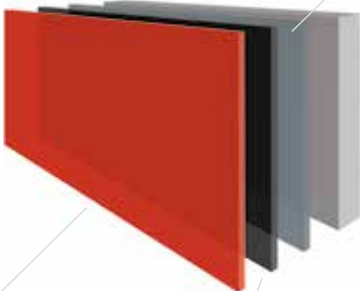


Thorough
pretreatment

A properly prepared surface is essential for a high-quality coating. Sand-blasting and degreasing ensure the best possible finish.

Complex
Tri-cationic phosphating

In the automotive industry too, tri-cationic phosphating (zinc, nickel and manganese) is the process typically employed to achieve the very highest standard and offers the best “substrate” for paints and a high level of corrosion resistance.



Eco-friendly
top coat

Latest-generation eco-friendly, solvent-free acrylic–water top coat and powder coating with a high degree of surface hardness ensure maximum weather resistance.

Protective
Cathodic dip painting

Unique KTL process with years of experience and environment-friendly energy consumption, thanks to the exclusive low temperature process.

TOP QUALITY SURFACE PROTECTION AT A GLANCE

Increased Resale Value

- Cranes with coating technology retains a higher resale value

Design and Looks

- Automotive quality paint finish
- The coating is elastic, abrasion-resistant and UV resistant
- High impact resistance and temperature resistance

High Value Retention

- Long-life surface protection
- Excellent corrosion protection of all components
- Perfect cavity protection

Environmental Friendliness

- Use of environmentally friendly paint



INTERLOCK SYSTEM



Product Features

PALFINGER cranes are equipped with an innovative outrigger safety system for manual stabilizer supports that prevent the outrigger from extending if a locking device fails.

How It Works

The handle is turned, which raises the main locking pin. A secondary lock is turned simultaneously, releasing the catch allowing the outrigger to be pulled out. When the outrigger is pushed back in, the main locking pin is automatically locked and the secondary lock is turned back to the locked position. The turning of the handle is blocked mechanically by means of a safety latch. Optionally, the position of this latch can be monitored with a proximity switch, so that up to four safety features would be incorporated into this one system.

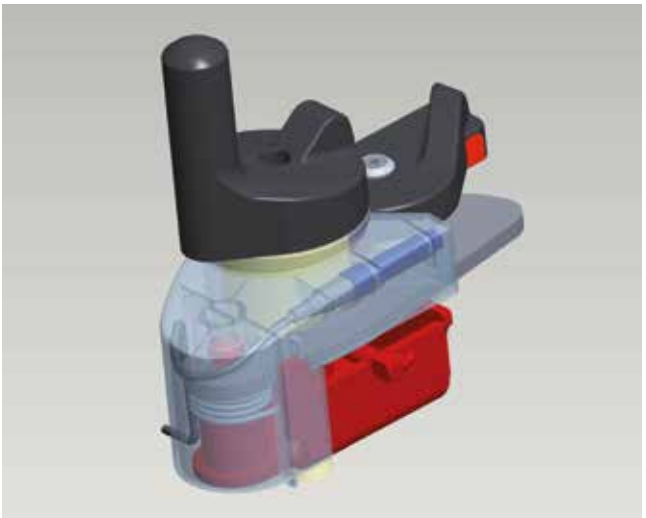
INNOVATIVE OUTRIGGER SAFETY SYSTEM

Safe Crane Operation and Transport

- Four features in one system
 - locking pin
 - arresting hook (secondary lock)
 - safety latch
 - monitoring of the safety latch
- No independent extension of the outrigger possible
- Warning and acoustic signal in the cab indicating position of outriggers

Operator-Friendliness

- Easier and faster deployment of outriggers
- Easier and faster stowage of outriggers
- Single-handed operation, even with gloves



CONTINUOUS SLEWING SYSTEM



Product Features

The PALFINGER Continuous Slewing Mechanism permits an unrestricted radius of action. The crane is rotated or 'slewed' using a gear box and hydraulic motor rather than a rack and pinion system. All endless slewing mechanisms come as standard with a high quality roller ball bearing.

How It Works

A hydraulic motor drives a pinion which meshes with a base-mounted high quality roller ball bearing, rotating the crane. The gears are precision machined to minimize back lash between the gears. The roller ball bearing is made with very tight tolerances for width, flatness, and perpendicularity. The matching surfaces on the base and the column are machined in a single clamping for the highest possible accuracy. On larger cranes two identically sized slewing motors are set across from each other on the column. One motor is hydraulically preloaded against the other, which eliminates all backlashes in the rotation system.

UNRESTRICTED MOVEMENT

More Efficiency in Use

- Faster cycle times because the crane can be slewed over a shorter distance. The crane works more efficiently and faster
- Higher slewing moment through minimized friction in the slewing mechanism

A great Variety of Applications

- Crane can be used independent of the vehicle position
- Load handling also possible in tight spatial conditions

Safe Crane Operation

- Safe and smoother operation due to elimination of catching endstop
- Accurate positioning of loads due to low clearance on slewing mechanism

Maintenance and Service-Friendliness

- Very little maintenance is needed on the ball bearing slewing ring

Increased Resale Value

- Longer service life of the slewing system because of the ball bearing slewing ring

HYDRAULICALLY TILTABLE STABILIZERS



Product Features

The stabilizer cylinders of the crane can be slewed upwards fully hydraulically by 180°. The stabilizer cylinders can be actuated on the control console, and also optionally on the radio remote control.

How It Works

Small and medium crane series:

A separate hydraulic cylinder creates a turning motion by means of a gear rack and gear wheel. This upward slewing function is combined hydraulically with the retraction/extension function of the supporting cylinder.

Large cranes:

The supporting cylinder is connected to an eccentric rod that uses the force of the retracting or extending supporting cylinder to slew the supporting cylinder upwards or downwards. It is very easy to operate and does not require a separate hydraulic function. The eccentric rod is equipped with a removeable pin. Removing the pin allows a full retraction of the piston rod and thus more ground clearance.

EASY HANDLING

More Efficiency in Use

- The crane can be mounted in a space-saving way directly above axles, tanks or toolboxes
- Longer cylinder strokes for optimum stabilizer support in different situations
- Outstanding ground clearance for optimized clearance angle and slope angle
- Stabilizer support of the crane possible despite obstacles. Guard rails, walls or fences can be overcome

Operator-Friendliness

- No separate operation necessary. The tiltable slewing function is combined with the retraction/extension function of the supporting cylinder
- No manual tiltable slewing of the supporting cylinder necessary



INTEGRAL BASE FRAME



Product Features

PALFINGER large cranes can be equipped with an integral base frame as a standard feature or an option depending on the crane size. Since the crane can be mounted directly onto the truck frame, there is a weight and height reduction.

How It Works

The integral base frame is designed so that it protects the truck against the forces that occur from crane operations as part of the sub-frame. The crane sits directly on the truck frame. The sub-frame itself is then fastened to the integral base frame in the form of a closed, torsion-resistant box.

PERFECT INTEGRATION

More Efficiency in Use

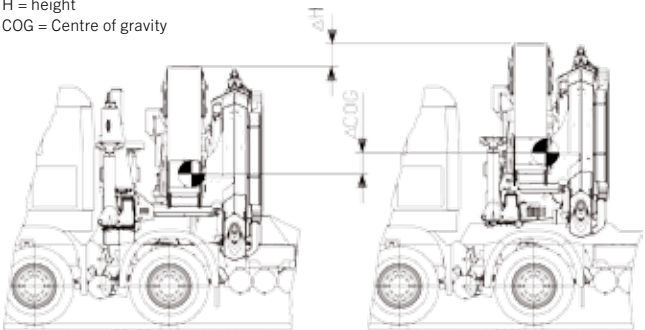
- Very low overall installation height and hence more possible applications in limited spatial conditions
- Due the weight savings, higher payloads can be transported
- A torsion-resistant construction reduces the spring-back during crane work

Safe Crane Operation

- Increase of the stability through low centre of gravity

H = height

COG = Centre of gravity



Integral Base

Standard Base

FUNCTIONAL DESIGN



Product Features

A good design must primarily fulfill its purpose, i.e. it should fulfill the function of the component the best way possible. moreover, it must be possible to use it easily, ergonomically and economically. PALFINGER knows how to combine the functionality with individuality - through the use of new materials, shapes, colors and detailed solutions.



FUNCTION AND DESIGN REDUCED TO A COMMON DENOMINATOR

Operator-Friendliness

- Functional design elements increase the operator comfort

Maintenance and Service-Friendliness

- Functional design elements simplify service and maintenance

Design and Looks

- Besides the functional benefits, there is a priceless image and advertising effect that comes with an optically high-quality product

Increased Resale Value

- Long-term value retention through protection of sensitive components and a modern appearance

Safe Crane Operation

- Functional design elements protect the operator against incorrect operations



CONTROL PANEL LIGHT



Product Features

The control panel of the High Performance models can be equipped with LED lighting and backlit symbols.

How It Works

LEDs in the hand-lever guard illuminate the entire control panel. They make it easier to read the machine functions and give the crane operator a quick general overview during the work process.

Operator-Friendliness

- Illumination of the entire control panel
- Very good visibility of the integrated operating symbols

Safe Crane Operation

- Safety and comfort, even with poor visibility

WARNING LIGHTS ON THE STABILIZERS



Product Features

The LED warning lights on the stabilizer cylinders are used for better visibility of the stabilizers.

Safe Crane Operation

- Better visibility of the outrigger position and stabilizer cylinder
- Safety for the crane operator, passers-by and flowing traffic

TILTABLE STABILIZER PLATES



Product Features

All stabilizers are equipped with a 10° tiltable stabilizer plate on a ball joint as a standard feature.

How It Works

The enlarged stabilizer plates of the supporting cylinder are moveable and facilitate better adaptation to the ground.

Safe Crane Operation

- Optimum adaptation of the stabilizer plate to the respective ground
- The enlarged plate reduces ground pressure

INTEGRAL TANK



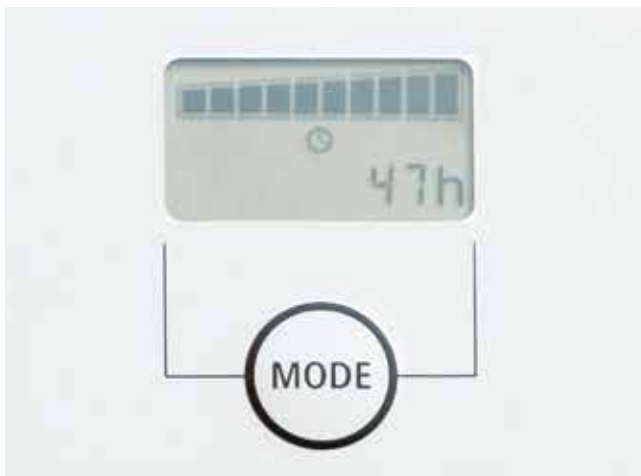
Product Features

The tank integrated on the base frame helps to save space. No additional installation space is required on the vehicle.

More Efficiency in Use

- Space saving assembly

DIGITAL OPERATING HOURS COUNTER



Product Features

The digital operating-hour counter is found on all of the High Performance series cranes.

The display modes inform the crane operator of

- total operating hours
- operating hours until the next service, and
- serial number of the unit

Maintenance and Service-Friendliness

- Easy to read the total hours
- Display of the hours until the next service
- Readout of the crane serial number
(important for diagnosis and spare parts supply)

DIGITAL HOUR COUNTER FOR ROPE WINCH



Product Features

The digital operation-hour counter for the rope winch is installed on all models of the High Performance series.

The display informs the crane operator of:

- the total operating hours of the rope winch
- the operating hours until the next service

Maintenance and Service-Friendliness

- Easy to read off the total hours
- Display of the hours until the next service



OIL COOLER

OPTIMAL TEMPERATURE



Product Features

PALFINGER oil coolers are offered from 8.5 kW to 20.0 kW depending on the crane size. They are light and compact and can be fastened directly to the base frame with a protective bracket. The coolers are mounted on the base frame as a standard feature for package cranes.

More Efficiency in Use

- Longer service life of the oil, seals, valves and other hydraulic components through lower oil temperature
- A smaller tank can be used for the same crane type. This way weight is saved
- The crane can be operated in a very hot climate and with high load cycles

HOSE EQUIPMENT



Product Features

With the hose equipment, it is very easy to connect additional attachments (fly-jib, rotator,...). The hoses are installed and protected in the hose tray.

More Cost-Effective in Use

- System with energy chains (as of 12 meter tonnes)
- Large diameter for high displacements and less heat generation

Operator-Friendly

- Error free connectors as per EN 12999:2011

Maintenance and Service Friendly

- Through assembling the hoses in sections

FLY-JIB SYSTEM



Product Features

A fly-jib system extends the working range of the crane and thereby increases the possible areas of application. The same crane can be used with or without the fly-jib and can therefore be adapted for different applications. Applications with additional attachments (grabber, rotator) and/or cable winch are possible. The higher the quality of the technical configuration of the fly-jib, the more efficient the application of the crane regarding the lifting power and outreach. The high competence of PALFINGER in lightweight construction is applied here directly in performance. Through a multitude of model variations, PALFINGER offers a complete, highly developed fly-jib system series for cranes from 15 to 150 meter tonnes.

How It Works

A fly-jib is a removable, hydraulic extension on the end of the extension system of the crane that can be tilted through a hydraulic function. A fly-jib can also be moved under load.

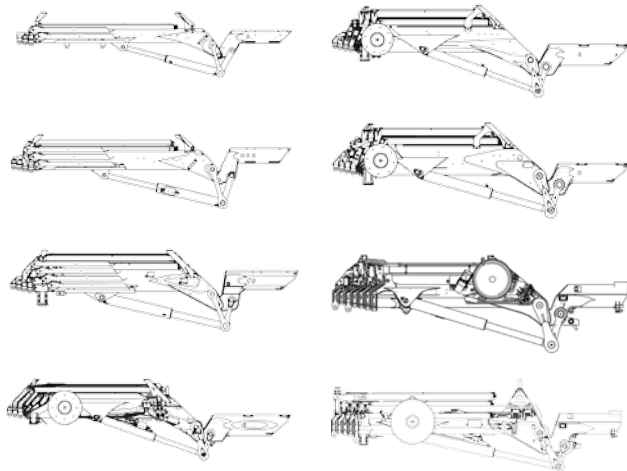
MORE POSSIBLE APPLICATIONS FOR YOUR TRUCK-MOUNTED CRANE

More Efficiency in Use

- Improvement of the movement geometry of the crane
- Lightweight construction for optimized lifting capacity
- Compact construction with low overall height

A great Variety of Applications

- Additional, very high knuckle point for working above building edges
- Additional working area as the fly jib can be angled upwards 25 degrees
- Increase in the outreach of the crane
- Higher outreach on the fly-jib due to up to 6 hydraulic extensions



DPS PLUS

DUAL POWER SYSTEM PLUS



Product Features

The Dual Power System (DPS Plus) makes it possible to use the full lifting power of the fly-jib through the use of two pressure ranges on the fly-jib. With DPS Plus the full lifting power of the fly-jib can be used if the crane's extension boom is not completely extended. It is perfect for crane-jib combinations with very long outreach.

How It Works

The fly-jib can also be operated with two pressure ranges through the use of a special electronic overload cut-off. If the last extension boom of the crane is extended (normal operation), then the lifting power is reduced to protect the crane against overloading. If the last extension boom of the crane is retracted (DPS Plus active), then the system switches automatically to the high pressure range thereby using the full lifting power of the fly-jib.

EFFICIENT FLY-JIB OPERATION

More Efficiency in Use

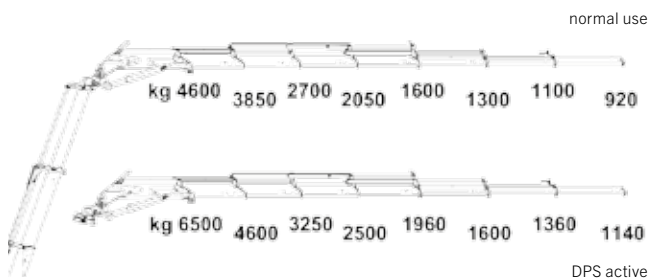
- Optionally available system for lifting power increase on the fly-jib
- Full lifting power on the fly-jib if the last extension boom of the crane is retracted

A great Variety of Applications

- Use of the crane both for large outreaches as well as for heavy load operation

Operator-Friendliness

- Automatic change-over on the extension system of the crane



Example: PK 92002-SH F PJ170 EJV1 DPS+

LOAD SENSING CONTROL VALVES



Product Features

PALFINGER only uses control valves that were developed in cooperation with premium manufacturers for the requirements of PALFINGER. As a result, there is a perfect interplay between the electronics and hydraulics, and maximum safety, comfort and functionality is guaranteed.

How It Works

The job of a control valve is to make it possible to control and monitor one or more hydraulic functions at the same time. Here, it is possible to accurately move each actuator (cylinder, motors, etc.) independently of the other connected unit.

PRECISION CONTROL

More Efficiency in Use

- Faster work cycles by controlling several functions at the same time
- High availability through maintenance and service-friendly design (sandwich construction)
- In connection with a variable displacement pump, LS valves ensure the highest energy efficiency

Operator-Friendliness

- Sensitive and precise control for delicate installation work
- No mutual interference of the movements through independent pressure compensators
- Joint development with PALFINGER for customized solutions for the control of truck-mounted cranes



ROPE WINCH



Product Features

A rope winch is in many cases the most important equipment for the operation of a loader crane. Hence the power of the winch itself determines the efficiency of the entire crane to a great extent. During the design process, the greatest possible attention was paid to the lifting capacity, speed and optimum winding behaviour. A complete series consisting of 1.5t, 2.5t, 3.5t and 4.5t winches is available thereby offering the ideal combination with the respective crane class.

How It Works

By using an axial piston motor, both very high starting torque under load as well as very high rope speed are achieved. The installation of the motor and brake as a unit inside the drum produces very compact dimensions.

ADDITIONAL POSSIBLE APPLICATIONS FOR YOUR TRUCK-MOUNTED CRANE

More Efficiency in Use

- High lifting power
- High starting torque makes it possible to start-up the rope winch under full load
- Rope lengths up to 90 meters make it possible to work with the fly-jib or in 4-line cable winch operation
- Reduced oil heating hence longer work cycles are possible
- Quick solutions for overcoming large lifting heights up to 50% higher, in comparison to conventional winches

Operator-Friendliness

- Better coiling of the rope through special grooving of the drum
- Use of the tried and proven mechanical solution for extension stop and limit switch

Increased Resale Value

- Optimized corrosion protection thanks to coating technology

POWER LINK ROPE WINCH



Product Features

The POWER LINK rope winch, a hydraulic, hinged rope winch on the main boom, sets new standards in connection with convenience, simplification of work and time saving in rope winch operation.

How It Works

Instead of mounting directly on the main boom, the rope winch is mounted on a hinged bracket. This bracket is brought into the work position from the transport position hydraulically. A linkage system is used to redirect the linear cylinder movement (Power Link). It is operated by radio remote control.

MORE CONVENIENCE IN ROPE WINCH OPERATION

More Efficiency in Use

- Low installation height during transport with folded up crane boom
- Low installation height when operating the cable winch
- Compact design

A great Variety of Applications

- Also possible to use crane inside buildings

Operator-Friendliness

- Quick start-up
- Easy operation with the radio remote control



RTC - ROPE TENSION CONTROL



Product Features

The new RTC (Rope Tension Control) system is an automatic rope tensioning device that helps to fold and unfold the crane. This is a further innovation from PALFINGER that will significantly shorten the set-up time.

How It Works

The Rope Tension Control can be activated or deactivated as required via the remote control, which is included as standard. All that needs to be done is for the rope to be clamped into the rope fixing point and secured via a rope securing bolt.

If any crane movements are performed that affect the rope length, the innovative system automatically adjusts the rope length to match.

The RTC system is controlled by the Paltronic of the PALFINGER crane.

REDUCING SET-UP TIME

More Efficiency in Use

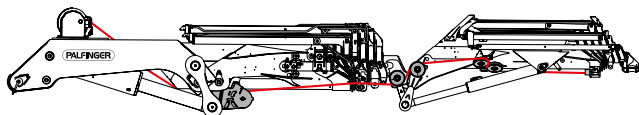
- Temporary hook operation with fly jib and reeved-in rope is possible. The time-intensive process of removing the rope is no longer necessary

Operator-Friendliness

- The crane operator is free to focus all attention on the process of folding and unfolding the crane, without constantly having to worry about adjusting the rope

Safe Crane Operation

- Rope damage is avoided



SRC - SYNCHRONISED ROPE CONTROL



Product Features

The SRC (Synchronised Rope Control) system maintains a constant distance between the pulley head and the hook block. This advantage is particularly valuable in terms of ease of use for the operator, and it also noticeably improves the efficiency of any operation.

How It Works

Sensors in the pulley head detect the movement and forward the signals directly to the Paltronic. If the SRC is activated, it automatically keeps the distance between the pulley head and the hook block constant during any crane movements that increase or decrease the rope length. A sensor on the pulley head detects that a rope length decreasing movement is being performed, when the boom is being extended. If the knuckle boom or fly jib is lowered, the SRC also adjusts the rope winch to keep a constant distance between the hook block and the pulley head.

MORE COMFORT IN ROPE WINCH OPERATION

More Efficiency in Use

- The load attached to the winch can be traversed horizontally at a constant height
- The load attached to the winch can be traversed at a specific angle
- The loading cycle is significantly improved

Operator-Friendliness

- The crane driver can focus all attention on the actual crane movements

Safe Crane Operation

- Particularly for less experienced crane operator, the system offers great assistance when working with the rope winch
- Avoidance of damage to the rope or load
- The hook block is prevented from running onto the pulley head

COMFORT CABLE ROUTING



Product Features

The lateral routing of the rope for the rope winch (Comfort Cable Routing) on crane/fly jib combinations represents a major benefit in terms of comfort and time savings during set-up.

How It Works

On all fly jib combinations, the rope of the winch is now routed laterally. It is no longer necessary to take off guide pulleys or intermediate pulleys when the crane is folded for transportation. The pulley head can also remain at the end of the boom and is simply moved to a special stowage position. And – last but not least – the rope itself can always remain reeved in when folding and unfolding the crane.

More Efficiency in Use

- Significant shortening of set-up times

HIGH STAND



Product Features

The high stand is presented with numerous detailed improvements - complete in line with the High Performance design and configurations used by PALFINGER. It complies with the new crane standard EN 12999: 2011 and is available alternatively for front and rear mounting.

Operator-Friendliness

- Ergonomic operating levers on the control console increase working convenience
- Very good visibility of the integrated operating elements
- Payload chart for the respective crane version

Safe Crane Operation

- Complies with crane standard EN 12999:2011
- Telescopic railings for convenient access and optimum work safety

MCC - MOUNTING COMPETENCE CENTER



Product Features

The strategic approach of the mounting competence center is based on 4 pillars.

1. Product development: The experience and newly gained expertise directly benefit product development. Developments in the field stability (HPSC), optimized support concepts and electronics, together with the vehicle interfaces can be optimised.
2. International support of the dealer network: New markets, dealers and partners are supported in technical tasks.
3. Standardisation & cost optimisation in mounting:
Today's crane vehicle construction solutions are predominantly customised and individual solutions. This means that the individual details of every mounting process are different. Standardised components are gradually being developed for quicker, more efficient and more cost-effective production.

EVERYTHING FROM A SINGLE SOURCE

4. Complete structures - „Everything from a single source“ means: one contact person, perfect planning, optimally organised assembly and perfectly coordinated mounting under optimal conditions. The central goal is to achieve maximum performance for the complete vehicle and, of course, for our cranes.

More Efficiency in Use

- Weight-optimised mounting components
- Perfectly adjusted cranes – maximum performance of the overall system

Best Service Organization

- Short project lead times
- Vehicle training and handover in the factory
- Coordination of deadlines between crane producer and mounting department. Reduction in costs of transport for mounting



HOSE GUIDES MAIN BOOM - KNUCKLE BOOM



Product Features

Hydraulic hoses between the main and knuckle boom are enclosed inside the unit. This patent pending solution provides protection against dirt and damage.

More Efficiency in Use

- Hoses protected against dirt and damage

LIGHTWEIGHT DESIGN



Product Features

By using high-quality, high-strength steels and increased use of plastics and light metals, PALFINGER cranes are becoming increasingly light weight with the result of higher payloads and lower operating costs.

More Efficiency in Use

- Lower fuel consumption means lower costs
- Greater payloads
- Lower overall operating costs
- More lifting power

Environmental Friendliness

- Lower fuel consumption means fewer emissions

HOSE EQUIPMENT INTERNALLY



Product Features

As an alternative to a conventional hose equipment, cranes can be configured with a hose drum on the main boom. The "T4I" system is available for up to 4 hydraulic outriggers.

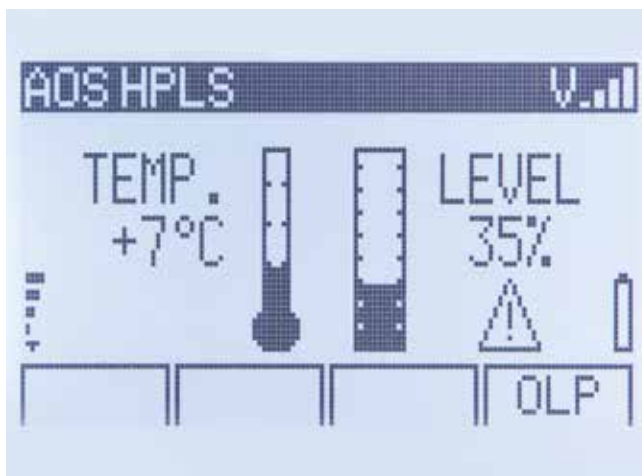
How It Works

The hydraulic hoses are routed in the extension boom system and can be simply connected using quick-release couplings. The hoses in the extension system are therefore completely protected against damage.

More Efficiency in Use

- Protected installation of the hoses
- Hoses can be connected easily with quick-release couplings

OIL LEVEL AND OIL TEMPERATURE DISPLAY



Product Features

Through the oil level and oil temperature display, the crane operator is informed of the respective status.

How It Works

Oil level display

At 25% of the total volume, a warning "Oil level low" appears. An acoustic signal is also given.

At 20% of the total volume, the crane is switched off after the warning.

Oil temperature display

At 75° oil temperature, there are visual and acoustic warnings.

At 90° oil temperature, after the warning, there is a message that the crane will be switched off after five minutes.

Safe Crane Operation

- Protection against overheating of the oil and hence protection of the entire hydraulic system

GEOMETRY CONTROL



Product Features

Modern knuckle-boom cranes reach critical boom positions due to their complex geometry (multitude of hydraulic outriggers, reverse linkage system, and fly-jib). To increase operating convenience and avoid incorrect operations, PALFINGER expanded the existing upright position monitoring to include extensive monitoring of the whole working range (geometrically calculated).

How It Works

The monitoring of the whole working range (geometrically calculated) adjusts the lifting power of the crane to the respective position of the main boom, knuckle boom and fly-jib and fulfils all the provisions of EN 12999:2011. As a complex overloading limitation, it detects all boom angles of the crane and activates an individual shut-off logic depending on the crane model and configuration.

Safe Crane Operation

- Automatic adjustment of the lifting power in critical boom positions
- Safe working possible up to 85° boom position
- Minimization of the risk of incorrect operations
- Automatic consideration of the fly-jib overextension

SEQUENCE CONTROL



Product Features

To achieve weight-optimized construction, several or all extension booms on a crane must have sequence control. This means that first the larger extension boom extends or retracts and only then the next smaller extension boom. The patented tube-in-tube sequence control with oil feed-through is technically the perfect solution to achieving a hose-free system.

EQUIPMENT



Product Features

The PALFINGER range of equipment includes a multitude of devices and add-ons that considerably expand the scope of applications of the crane. Grippers, rotators, crane forks and much more are available. All accessories from the PALFINGER Equipment Centre are optimized to be added to the PALFINGER truck-mounted crane and are therefore the first choice. Besides an extensive range of standard products, special solutions are also available on request.

A great Variety of Applications

- A crane can be used as a multipurpose work machine
- All from one hand - one contact person for crane and equipment
- PALFINGER Warranty & Service

DIVERSE APPLICATIONS FOR DAILY USE



Rotator



Earth auger



HPX-Grapper systems



Digging bucket



Bulk material grab



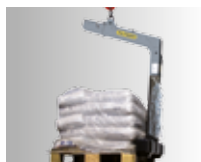
Polyp grab



Barrier grab



Hydraulic wallboard forks



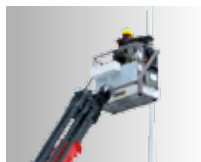
Crane fork



Brick stack grab



Manipulators



Workman basket



Bottle-bank discharge units



Car lifting devices



Hybrid drive



EST boxes

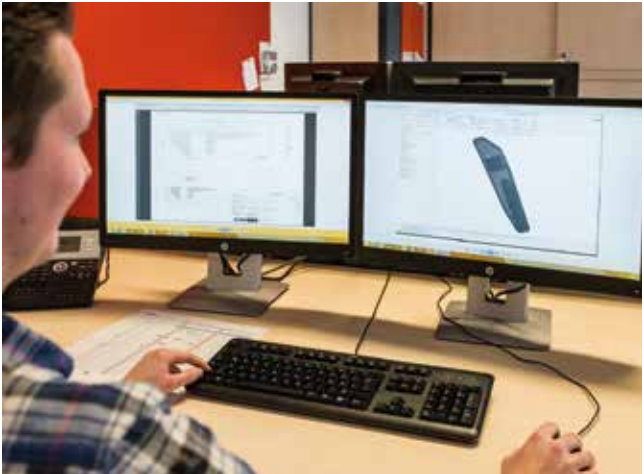


Stabilisers



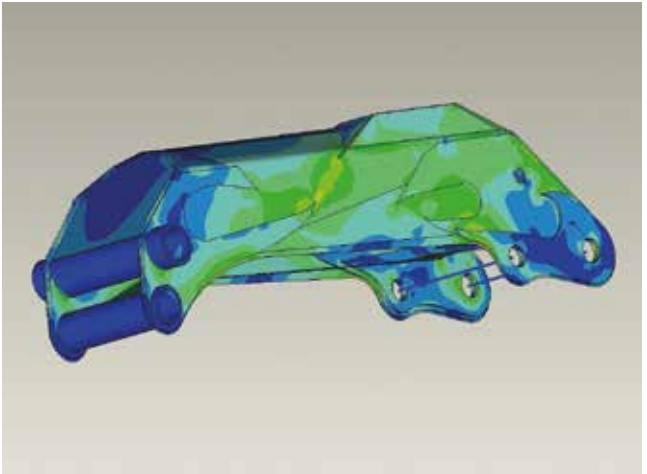
Pump

DEVELOPMENT



The foundation for a reliable and successful product is based in its design. Finite element calculations, field and endurance tests, DMS measurements and transport simulations ensure an optimum balance between weight and strength. At the new research and development centre in Köstendorf, interest is focused on topics like "ergonomics, functionality, weight and material optimization". Major involvement in the area of research and development, cooperation with universities and technical universities form the foundation for innumerable patents and innovations in the competence areas of the geometry of kinematics, electronics, painting technology, materials, processing and production technology.

FINITE ELEMENT TECHNOLOGY



High-tech in crane design - all load-bearing components are calculated with finite element technology, which has been used for years. They are optimized and designed to be weight-saving. Years of development edge - PALFINGER's ideas are repeatedly copied and many of solutions developed by PALFINGER become the technical standard in crane construction over the years.



EXPANSION MEASUREMENTS, ENDURANCE TESTS, HYDROPULSER TEST BENCHES



By using expansion measurements and automatic endurance tests, PALFINGER cranes are tested for the expected service life even before the start of production and within a few months. The components are subjected to the harshest loads on modern hydropulser test benches to be able to offer top quality products. With this technology, it is possible for PALFINGER to optimize components to meet the harshest customer demands.

„SHAKER” VIBRATION AND SHOCK SIMULATIONS



Electronic and hydraulic components on the truck-mounted crane are subjected to extremely high environmental loads. In the environment simulation lab, all electronic and hydraulic components are subjected to the respective test procedures. In the vibration test system ("Shaker"), shock, vibration and broadband noise tests are conducted according to international standards. These procedures simulate different road driving and pothole situations.



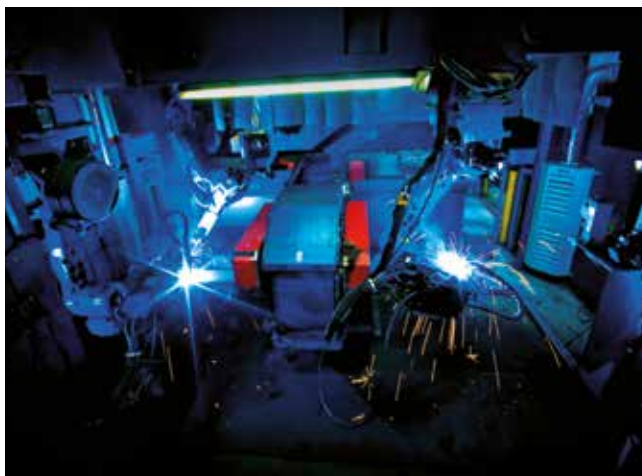
CLIMATE EXPOSURE TEST CABINET



We test the most important components (control spool and electronic components) in the climate exposure test cabinet, which simulates tough, real conditions (extremely low and/or high temperatures, temperature fluctuations, air humidity,...).



PRODUCTION TECHNOLOGY



The foundation stone for quality is laid in production. Through the specialization of component manufacturing in the individual PALFINGER production plants, PALFINGER optimizes its processes and thereby increases its productivity and quality. In the field of steel processing and machining, PALFINGER has the latest cutting, edging and welding technologies in its production sites. A highlight is the new, highly-automated hexagonal boom production in the Austrian plant in Lengau. Thanks to the new technology, high-strength steel can be processed and machined with extreme precision. Even the tiniest deviations in manufacturing are avoided and as a result even more exact crane movements are guaranteed. Following numerous modernization measures, the plant in Marburg now operates as a competence centre for the production of large components. With the cylinder production in Tenevo, PALFINGER has advanced and become the largest manufacturer of hydraulic cylinders worldwide.

QUALITY MANAGEMENT



Our quality management system is aimed at our customers and is based on the core thinking of direct responsibility of all employees; it ensures the systematic consideration of the "quality" aspect in all phases of product development, product creation in the utilisation phase. We are therefore able to ensure that

- Our customers have faith in our ability to produce quality and are satisfied with our performance;
- Our organisation is financially successful and
- Employee satisfaction is high.

Based on our corporate policy we maintain and document a quality management system that caters for all 5 interest groups (customers, employees, owners, contemporaries, environment and suppliers). It encompasses every phase of service provision and its aim is to ensure long-term quality and customer satisfaction.

Ongoing internal audits and the external audit, together with the management review, ensure that the QM system is adhered to and that it works.

ASSEMBLY AND TESTING



PALFINGER cranes are assembled in team manufacturing. And, before they leave the plant, they have passed a lot of tests. The highest quality standards require strict and meticulously accurate testing methods. Therefore, at PALFINGER, every crane passes through an extensive check on the test bench. With the help of special test software, successive execution of the stipulated testing steps takes place on the basis of specifically defined master test plans.

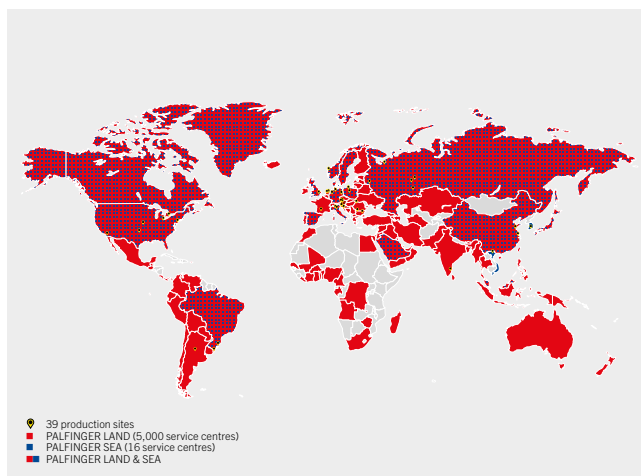
Safe Crane Operation

- Meticulous tests guarantee reliable and safe crane work

Increased Resale Value

- Certified quality fetches higher resale values

SERVICE NETWORK



With over 4600 sales and service bases worldwide, PALFINGER provides an extensive service network. Exclusively top trained, highly motivated personnel and specifically developed special tools ensure our service. At the PALFINGER University, all employees are familiarised with the specific expertise necessary for this. This includes the latest technologies, but also current regulations and norms.

More Efficiency in Use

- Low failure rates
- Highest equipment availability

Best Service Organisation

- Highly trained workshop employees
- High availability of spare parts
- Quick help in emergencies

DEALER STANDARDS



By the PALFINGER Standards programme, the compliance with the high quality standards in the global sales and service network is ensured. By recurring audits, the consistent appearance and the high recognition value for the customer are ensured. Standardized processes and high professionalisation over the whole process chain secure our partners long-time competitiveness.

Best Service Organisation

- Competent and professional advice in choosing a PALFINGER product
- Perfect customised vehicle concept
- Quick, professional and uncomplicated support
- Worldwide consistent standards

PALFINGER ORIGINAL SPARE PARTS



PALFINGER original spare parts are always the first choice. They are manufactured in accordance with the PALFINGER standards and are tested for their compliance with our strict quality standards. The original parts convince due to their highest reliability and efficiency. In order to keep possible stand-still times as short as possible in a case of damage, PALFINGER relies on a global spare parts network. Five big spare parts centers guarantee highest availability of the individual spare parts. Due to these consistent spare parts logistics, the provision of individual spare parts is possible within 24 hours. Parts logistics just in time.

More Efficiency in Use

- Low failure rates
- High equipment availability

Increased Resale Value

- Longer equipment service life thanks to the spare parts guarantee





Provides support with sales, mounting and service of our products for our dealers and customers.

PALcode Mobile App: It is designed for the users of the PALFINGER sales & service network and is thereby an ideal counterpart to the existing app „PALFINGER Mobile“ for end customers.

PALremote: Programme for remote maintenance and remote diagnosis.

Paldiag.NET: Programme for diagnosis and configuration of PALTRONIC and radio remote control.

Pacwin.NET: Mounting calculation programme for the determining of axle loads, stability and load capacity.

PAF: Programme for vehicle chassis calculation.

PALipedia: Programme for the display of technical information sheets, spare parts catalogues, electrical/ hydraulic diagrams, service information, training documents, mounting guidelines, repair manuals and repair times catalogue.

PALchart: Programme for the creation of load capacity diagrams of reduced operation ranges.

PALSHOW.NET: Programme for showing payload curves and payload analyses

PALdesk: Is an individually adaptable user interface. It shows the user all relevant information in a process-oriented way along the lifecycle of a product.

TRAINING PALFINGER UNIVERSITY



The PALFINGER PAL-U training academy offers a wide range of technical and sales courses enabling you to provide end customers with the best possible advice and guidance. It's the combination of practical work with extensive PALFINGER knowledge that participants on the PALFINGER University courses get the most from. PALFINGER's state-of-the-art training centre in Salzburg Kasern has five seminar rooms, a demo centre and a training bay, providing the optimum training environment.

Best Service Organization

- Worldwide competent help in the workshops
- The latest level of knowledge in technology
- Efficient knowledge transfer through "Train the Trainer" training
- Knowledge transfer through crane briefing



WARRANTY



PALFINGER cranes are quality products.
PALFINGER guarantees maximum cost-effectiveness through three different warranty terms.

More Efficiency in Use

- 12 months full warranty on all cranes and radio remote controls
- 24 months warranty on all load-bearing parts of cranes that work in gripper operation
- 36 months warranty on all load-bearing parts of cranes that work in hook operation
- Warranty extension up to 24 months full warranty possible
- Warranty extension up to 36 months full warranty possible

SUSTAINABILITY



By truly embracing sustainability we take responsibility for tomorrow – as a responsible employer, we produce sustainable products in an eco-efficient manner and stand for fair business. PALFINGER has been paying attention to topics such as sustainability for more than 10 years. It is viewed as an interdisciplinary matter that has been genuinely incorporated into the various areas of the company as a matter of course.

Ece-Efficiency in Production

Energy efficiency and climate protection are relevant throughout the entire production process. PALFINGER is aware of its environmental responsibility and due to selfinterest has committed to the goal to manage resources economically and efficiently.

- Efficient use of raw materials and continuous optimization of waste cuttings and rejections
- Energy efficiency as part of the continuous production optimization
- Continuous reduction of emissions in terms of climate protection
- Avoidance of waste and of release of hazardous substances and measures from PALFINGER's energy saving manual

SHAPING THE FUTURE. LIVING RESPONSIBILITY.

Sustainable Products

Minimizing energy consumption, cost and emissions throughout the product life cycle are as important to PALFINGER as maximizing safety while using the products.

- Widespread use of safety features and concepts to prevent accidents
- Investments in product innovations for user safety as well as in research and development
- Efficient and eco-friendly products with low need for energy and operating materials
- Products of superior quality, reliable, made to last and low in maintenance

Responsible Employer

Employees are a material factor of PALFINGER's success. Therefore, their motivation, qualifications and, first and foremost, their health and safety are given high priority. Another focus lies with the group-wide diversity-project "PALiversity".

- Offer of attractive workplaces
- Occupational health and safety as the overriding priority
- Promotion of further education and training programs
- Open mind approach to diversity at PALFINGER and support of equal opportunity

Fair Business

Cost effectiveness is reflected in entrepreneurial thinking, the objective being to make a profit and achieve sustainable, profitable growth. Priorities include the Code of Conduct, the prevention of corruption, integrity line and fair taxation.

- Long term viable business model
- Guarantee of compliance with legal and ethical standards
- Securing integrity by PALFINGER's Code of Conduct
- Correct corporate governance and behavior according to defined corporate values
- Integrity line helps to prevent embezzlement and corruption

NOTES

INTERACTIVE PDF

The interactive PDF is available for you on the brochure service.



PALFINGER AG
Lamprechtshausener Bundesstraße 8
5101 Bergheim
Austria

T +43 662 2281
info@palfinger.com
www.palfinger.com